

FIG 1
TFSX CABLE MATED WITH SFSDX CABLE

TABLE 1				
	TFSX		WIPE	
	"A" FULLY MATED	"A" MAX	FULLY MATED	MIN @ "A" MAX
SFSDX	.828 [21.03]	.874 [22.20]	.061 [1.55]	.015 [0.38]

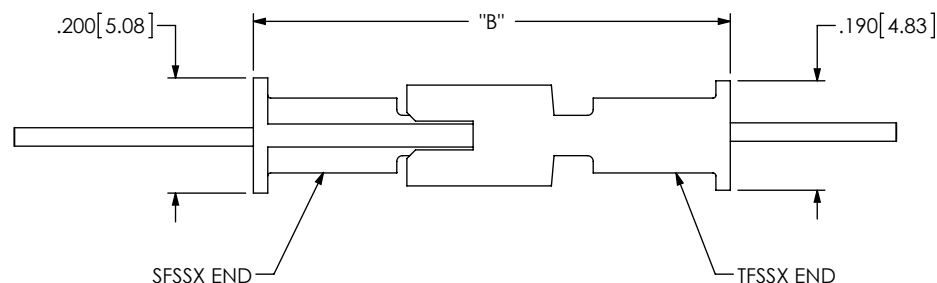


FIG 2
TFSX CABLE MATED WITH SFSSX CABLE

TABLE 2				
	TFSX		WIPE	
	"B" FULLY MATED	"B" MAX	FULLY MATED	MIN @ "B" MAX
SFSSX	.828 [21.03]	.874 [22.20]	.061 [1.55]	.015 [0.38]

NOTES:

1. ALTHOUGH MAX DIMENSIONS ARE LISTED SAMTEC RECOMMENDS FULLY MATING COMPONENTS.
2. ALL DIMENSIONS BASED ON NOMINAL VALUES FOR SAMTEC RECOMMENDED PCB LAYOUTS.

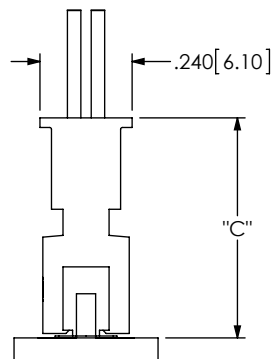


FIG 3

TFSX CABLE MATED WITH SFM/SFC/SFML-D-SM

TABLE 3					
		TFSX		WIPE	
		"C" FULLY MATED	"C" MAX	FULLY MATED	MIN @ "C" MAX
SFM-D LEAD STYLE	-02/-L2/-T2	.573 [14.55]	.611 [15.52]	.053 [1.35]	.015 [0.38]
SFC-D LEAD STYLE	-T2	.573 [14.55]	.611 [15.52]	.053 [1.35]	.015 [0.38]
SFML-D LEAD STYLE	-02/-L2/-T2	.573 [14.55]	.611 [15.52]	.053 [1.35]	.015 [0.38]

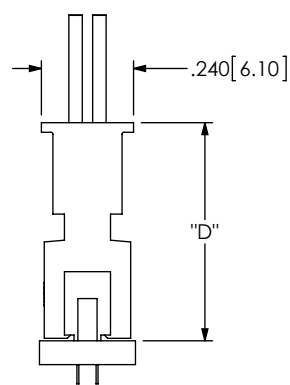


FIG 4

TFSX CABLE MATED WITH SFM/SFC/SFML-D-TH

TABLE 4					
		TFSX		WIPE	
		"D" FULLY MATED	"D" MAX	FULLY MATED	MIN @ "D" MAX
SFM-D LEAD STYLE	-01/-03/-L1/-L3/-T1	.568 [14.43]	.607 [15.42]	.054 [1.37]	.015 [0.38]
SFC-D LEAD STYLE	-T1	.568 [14.43]	.607 [15.42]	.054 [1.37]	.015 [0.38]
SFML-D LEAD STYLE	-01/-03/-L1/-L3/-T1	.568 [14.43]	.607 [15.42]	.054 [1.37]	.015 [0.38]

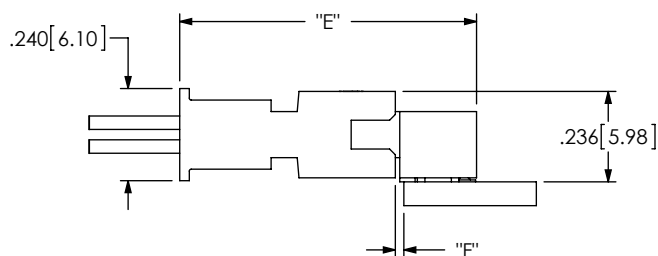


FIG 5

TFSX CABLE MATED SFM-DH

TABLE 5						
		TFSX				WIPE
		"E" FULLY MATED	"E" MAX	"F" FULLY MATED	"F" MAX	FULLY MATED
SFM-D LEAD STYLE	-02-DH	.773 [19.63]	.811 [20.60]	.022 [0.56]	.060 [1.52]	.053 [1.35]

* PROPRIETARY NOTE *
 THIS DOCUMENT CONTAINS CONFIDENTIAL AND
 PROPRIETARY INFORMATION AND ALL DESIGN,
 MANUFACTURING, REPRODUCTION, USE, PATENT RIGHTS
 AND SALES RIGHTS ARE EXPRESSLY RESERVED BY SAMTEC,
 INC. THIS DOCUMENT SHALL NOT BE DISCLOSED, IN WHOLE
 OR PART, TO ANY UNAUTHORIZED PERSON OR ENTITY NOR
 REPRODUCED, TRANSFERRED OR INCORPORATED IN ANY
 OTHER PROJECT IN ANY MANNER WITHOUT THE EXPRESS
 WRITTEN CONSENT OF SAMTEC, INC.

samtec
 520 PARK EAST BLVD, NEW ALBANY, IN 47150
 PHONE: 812-944-6733 FAX: 812-948-5047
 e-Mail info@SAMTEC.com code 55322

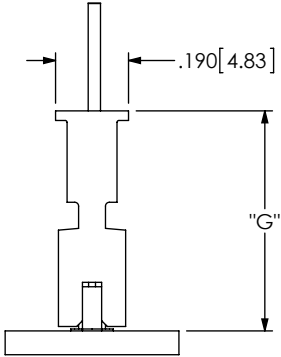


FIG 6
TFSX CABLE MATED WITH SFM-S-SM

TABLE 6					
		TFSSX		WIPE	
		"G" FULLY MATED	"G" MAX	FULLY MATED	MIN @ "G" MAX
SFM-S LEAD STYLE	-02/-L2/-T2	.573 [14.55]	.611 [15.52]	.053 [1.35]	.015 [0.38]

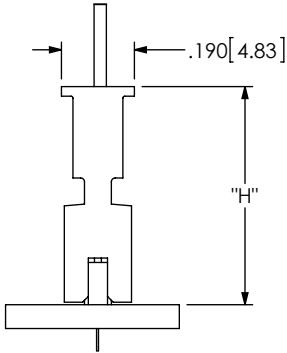


FIG 7
TFSX CABLE MATED WITH SFM-S-TH

TABLE 7					
		TFSSX		WIPE	
		"H" FULLY MATED	"H" MAX	FULLY MATED	MIN @ "H" MAX
SFM-S LEAD STYLE	-01/-03/-L1/-L3/-T1	.568 [14.43]	.607 [15.42]	.054 [1.37]	.015 [0.38]

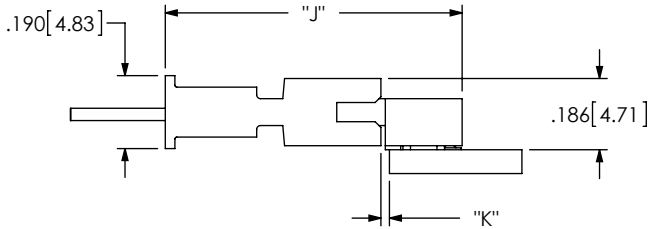


FIG 8
TFSX CABLE MATED WITH SFM-SH

TABLE 8							
		TFSSX LEAD STYLE				WIPE	
		"J" FULLY MATED	"J" MAX	"K" FULLY MATED	"K" MAX	FULLY MATED	MIN @ "J" MAX
SFM-S LEAD STYLE	-02-SH	.773 [19.63]	.811 [20.60]	.022 [0.56]	.060 [1.52]	.053 [1.35]	.015 [0.38]

PROPRIETARY NOTE
THIS DOCUMENT CONTAINS CONFIDENTIAL AND PROPRIETARY INFORMATION AND ALL DESIGN, MANUFACTURING, REPRODUCTION, USE, PATENT RIGHTS AND SALES RIGHTS ARE EXPRESSLY RESERVED BY SAMTEC, INC. THIS DOCUMENT SHALL NOT BE DISCLOSED, IN WHOLE OR PART, TO ANY UNAUTHORIZED PERSON OR ENTITY NOR REPRODUCED, TRANSFERRED OR INCORPORATED IN ANY OTHER PROJECT IN ANY MANNER WITHOUT THE EXPRESS WRITTEN CONSENT OF SAMTEC, INC.



520 PARK EAST BLVD, NEW ALBANY, IN 47150
PHONE: 812-944-6733 FAX: 812-948-5047
e-Mail info@SAMTEC.com code 55322

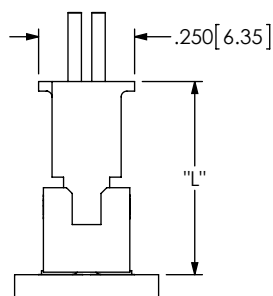


FIG 9

SFS DX CABLE MATED WITH TFM/TFC/TFML-D-SM

TABLE 9					
		SFS DX		WIPE	
		"L" FULLY MATED	"L" MAX	FULLY MATED	MIN @ "L" MAX
TFM/TFC-D LEAD STYLE	-02	.503 [12.78]	.518 [13.16]	.030 [0.76]	.015 [0.38]
	-12	.573 [14.55]	.596 [15.14]	.038 [0.97]	.015 [0.38]
	-22	.643 [16.33]	.666 [16.92]	.038 [0.97]	.015 [0.38]
	-32	.718 [18.24]	.741 [18.82]	.038 [0.97]	.015 [0.38]
TFML-D LEAD STYLE	-02	.497 [12.62]	.515 [13.08]	.033 [0.84]	.015 [0.38]

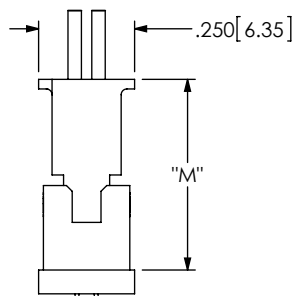


FIG 10

SFS DX CABLE MATED WITH TFM/TFC/TFML-D-TH

TABLE 10					
		SFS DX		WIPE	
		"M" FULLY MATED	"M" MAX	FULLY MATED	MIN @ "M" MAX
TFM/TFC-D LEAD STYLE	-01	.497 [12.61]	.512 [12.99]	.030 [0.76]	.015 [0.38]
	*-03	.497 [12.61]	.520 [13.20]	.038 [0.97]	.015 [0.38]
	-11	.567 [14.39]	.590 [14.97]	.038 [0.97]	.015 [0.38]
	*-13	.567 [14.39]	.590 [14.97]	.038 [0.97]	.015 [0.38]
	-21	.637 [16.17]	.660 [16.75]	.038 [0.97]	.015 [0.38]
	*-23	.637 [16.17]	.660 [16.75]	.038 [0.97]	.015 [0.38]
	-31	.712 [18.07]	.735 [18.66]	.038 [0.97]	.015 [0.38]
TFML LEAD STYLE	-01	.497 [12.61]	.515 [13.07]	.033 [0.84]	.015 [0.38]

(* = ONLY AVAILABLE WITH TFM)

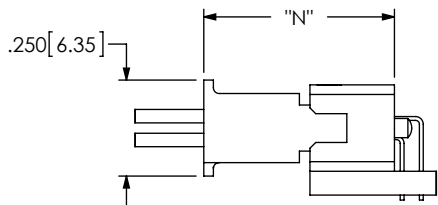


FIG 11

SFS DX CABLE MATED WITH TFM/TFC-D-RA

TABLE 11					
		SFS DX		WIPE	
		"N" FULLY MATED	"N" MAX	FULLY MATED	MIN @ "N" MAX
TFM/TFC-D LEAD STYLE	-01-RA	.497 [12.61]	.522 [13.25]	.040 [1.02]	.015 [0.38]
TFML-D LEAD STYLE	-01-RA	.497 [12.61]	.525 [13.32]	.043 [1.09]	.015 [0.38]

PROPRIETARY NOTE
THIS DOCUMENT CONTAINS CONFIDENTIAL AND
PROPRIETARY INFORMATION AND ALL DESIGN,
MANUFACTURING, REPRODUCTION, USE, PATENT RIGHTS
AND SALES RIGHTS ARE EXPRESSLY RESERVED BY SAMTEC,
INC. THIS DOCUMENT SHALL NOT BE DISCLOSED, IN WHOLE
OR PART, TO ANY UNAUTHORIZED PERSON OR ENTITY NOR
REPRODUCED, TRANSFERRED OR INCORPORATED IN ANY
OTHER PROJECT IN ANY MANNER WITHOUT THE EXPRESS
WRITTEN CONSENT OF SAMTEC, INC.

samtec

520 PARK EAST BLVD, NEW ALBANY, IN 47150
PHONE: 812-944-6733 FAX: 812-948-5047
e-Mail info@SAMTEC.com code 55322

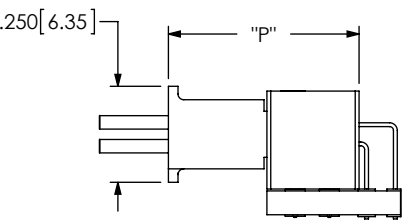


FIG 12
SFSDX CABLE MATED WITH TFM-D-REX

TABLE 12					
		SFSDX		WIPE	
		"P" FULLY MATED	"P" MAX	FULLY MATED	MIN @ "P" MAX
TFM-D LEAD STYLE	-01-REX	.497 [12.61]	.519 [13.17]	.037 [0.94]	.015 [0.38]

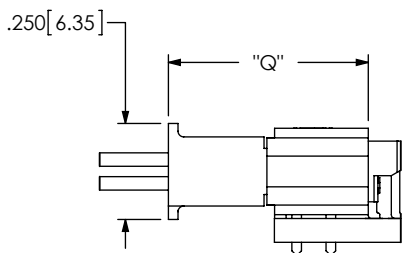


FIG 13
SFSDX CABLE MATED WITH TFM-DH

TABLE 13					
		SFSDX		WIPE	
		"Q" FULLY MATED	"Q" MAX	FULLY MATED	MIN @ "Q" MAX
TFM-D LEAD STYLE	-02-DH	.521 [13.22]	.555 [14.08]	.049 [1.24]	.015 [0.38]

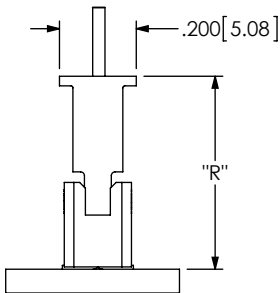


FIG 14
SFSSX CABLE MATED WITH TFM-S-SM

TABLE 14					
		SFSSX		WIPE	
		"R" FULLY MATED	"R" MAX	FULLY MATED	MIN @ "R" MAX
TFM-S LEAD STYLE	-02	.503 [12.76]	.518 [13.14]	.030 [0.76]	.015 [0.38]

PROPRIETARY NOTE
THIS DOCUMENT CONTAINS CONFIDENTIAL AND
PROPRIETARY INFORMATION AND ALL DESIGN,
MANUFACTURING, REPRODUCTION, USE, PATENT RIGHTS
AND SALES RIGHTS ARE EXPRESSLY RESERVED BY SAMTEC,
INC. THIS DOCUMENT SHALL NOT BE DISCLOSED, IN WHOLE
OR PART, TO ANY UNAUTHORIZED PERSON OR ENTITY NOR
REPRODUCED, TRANSFERRED OR INCORPORATED IN ANY
OTHER PROJECT IN ANY MANNER WITHOUT THE EXPRESS
WRITTEN CONSENT OF SAMTEC, INC.



520 PARK EAST BLVD, NEW ALBANY, IN 47150
PHONE: 812-944-6733 FAX: 812-948-5047
e-Mail info@SAMTEC.com code 55322

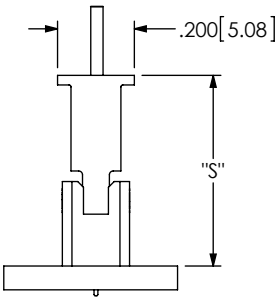


FIG 15
SFSSX CABLE MATED WITH TFM-S-TH

TABLE 15					
		SFSSX		WIPE	
		"S" FULLY MATED	"S" MAX	FULLY MATED	MIN @ "S" MAX
TFM-S LEAD STYLE	-01	.497 [12.62]	.512 [13.00]	.030 [0.76]	.015 [0.38]
	-03	.497 [12.62]	.520 [13.21]	.038 [0.97]	.015 [0.38]

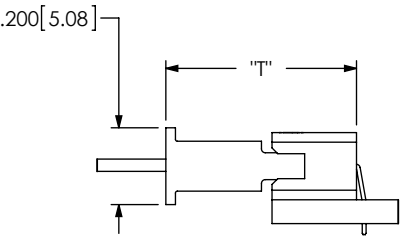


FIG 16
SFSSX CABLE MATED WITH TFM-S-RA

TABLE 16					
		SFSSX		WIPE	
		"T" FULLY MATED	"T" MAX	FULLY MATED	MIN @ "T" MAX
TFM-S LEAD STYLE	-01-RA	.497 [12.62]	.517 [13.13]	.035 [0.89]	.015 [0.38]

PROPRIETARY NOTE
THIS DOCUMENT CONTAINS CONFIDENTIAL AND PROPRIETARY INFORMATION AND ALL DESIGN, MANUFACTURING, REPRODUCTION, USE, PATENT RIGHTS AND SALES RIGHTS ARE EXPRESSLY RESERVED BY SAMTEC, INC. THIS DOCUMENT SHALL NOT BE DISCLOSED, IN WHOLE OR PART, TO ANY UNAUTHORIZED PERSON OR ENTITY NOR REPRODUCED, TRANSFERRED OR INCORPORATED IN ANY OTHER PROJECT IN ANY MANNER WITHOUT THE EXPRESS WRITTEN CONSENT OF SAMTEC, INC.



520 PARK EAST BLVD, NEW ALBANY, IN 47150
PHONE: 812-944-6733 FAX: 812-948-5047
e-Mail info@SAMTEC.com code 55322