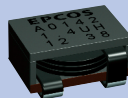
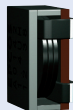
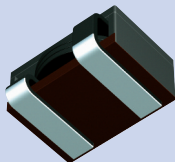


EPCOS Sample Kit 2013

# ERU Chokes

ERU 13 Series – B82559A\*A013

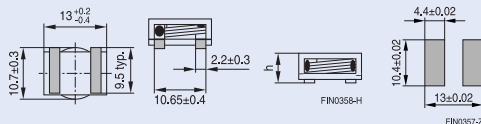


## ERU Chokes – ERU 13

### SMD

<b>L (inductance) ±10%</b>	<b>μH</b>	<b>0.5</b>	<b>0.95</b>	<b>1.1</b>	<b>1.4</b>
$I_{sat, typ}$	A	30	25	20	22
$DCR_{max} \pm 15\%$	mΩ	0.78	1.12	1.72	1.5
Height $h_{max}$	mm	4.95	5.95	4.95	6.00
Ordering code	B82559	A0501A013	A0951A013	A0112A013	A0142A013
<b>L (inductance) ±10%</b>	<b>μH</b>	<b>2.15</b>	<b>2.4</b>	<b>3.0</b>	<b>3.9</b>
$I_{sat, typ}$	A	15	16.5	13	12
$DCR_{max} \pm 15\%$	mΩ	3.2	2.76	4.0	4.8
Height $h_{max}$	mm	4.95	5.95	4.95	5.95
Ordering code	B82559	A0222A013	A0242A013	A0302A013	A0392A013

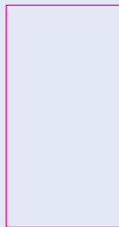
- All values measured at 20 °C ambient temperature
- $I_{sat, typ}$  is current that will result in 20% reduction of nominal inductance
- Temperature response needs to be verified in specific applications; test results on request
- Operating temperature: -40 to +130 °C
- Flat wire winding: extremely low-resistance coil
- Self-leaded construction features under body termination for smallest possible footprint
- Special values and sizes on request
- Blister tape packaging:



Mechanical dimensions and suggested pad layout (reference only)

Height of component	Reel
$h = 4.95 \text{ mm}$	750 pcs.
$h = 5.95/6.00 \text{ mm}$	500 pcs.

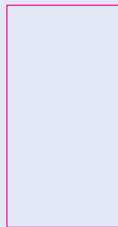
0.5  $\mu\text{H}$



0.95  $\mu\text{H}$



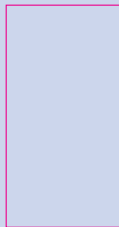
1.1  $\mu\text{H}$



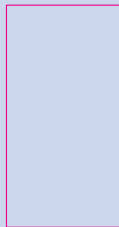
1.4  $\mu\text{H}$



2.15  $\mu\text{H}$



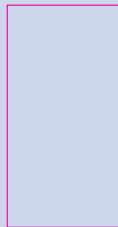
2.4  $\mu\text{H}$



3.0  $\mu\text{H}$



3.9  $\mu\text{H}$



**Important information:** It is incumbent on the customer to check and decide whether a product is suitable for use in a particular application. Our products are described in detail in our data sheets. Our *Important notes* and the product-specific *Cautions and warnings* must be observed. All relevant information is available through our sales offices.