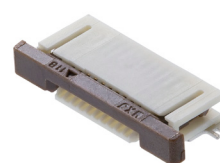


# Easy-On FFC/FPC Connectors, 0.50/1.00mm pitch, Slider Series

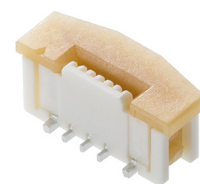
# molex

**Market proven “Slider” locking mechanism, wide circuit size selection and top, bottom or vertical contact variation can help for FFC/FPC cable routing from this product list**

General market and any industry request for quick sample availability and wide variety of selection. Almost of all applications move for smaller and slimmer device, Slider series helps with right angle for height 2.00mm with wide variety selection. Molex super low profile and proven history with slider locking mechanism is accommodated for any contact direction, top, bottom, vertical which helps for any requirement and also flexibility with plating selection from gold or tin. Molex Micro Solution design provide any solution to solve any market requirement.



Right Angle



Vertical

## Features and Advantages

### Circuit size is available

Selection from 4 to 30 circuits with any option design

### FFC/FPC contact point is Top Contact, Bottom Contact or Vertical type

Can choose any FFC/FPC wiring direction in the application

### Signal contact point is plated Gold or Tin over Nickel

Selective plating prevents solder wicking during SMT process

### Top contact

52745/52435/54104 for 0.50mm pitch  
52207 for 1.00mm pitch

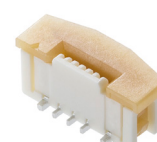
### Bottom contact

52746/52437/54132 for 0.50mm pitch  
52271 for 1.00mm pitch

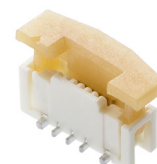
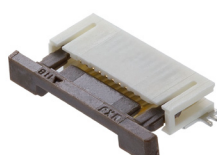
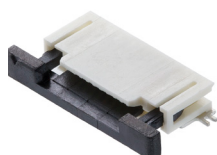
### Vertical contact

52559 for 0.50mm pitch  
52610 for 1.00mm pitch

Actuator  
Close status



Actuator  
Open status



## Applications

### Industry

- IoT interconnection device
- Smart Speaker
- UAV (Drone)
- FA robot
- Security Camera

### Mobile

- POS terminal

### Consumers

- Home Appliance

### Medical

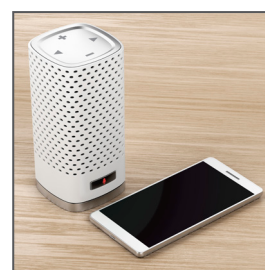
- Patient Monitoring
- MRI / CT
- Disposable inspection device



POS terminal



Medical



IoT device

# Easy-On FFC/FPC Connectors, 0.50/1.00mm pitch, Slider Series

# molex

## Specifications

### REFERENCE INFORMATION

Packaging: Embossed Tape on Reel  
Mates With: FFC/FPC  
Designed In: Millimeters  
RoHS: Yes

### ELECTRICAL

Voltage (max.): 50V  
Current (max.): 0.5A  
Contact Resistance (max.): 20 Milliohms  
Dielectric Withstanding Voltage: 250V AC (rms)  
Insulation Resistance: 50 Megaohms min.

### MECHANICAL

FFC/FPC Thickness: 0.30mm  
Durability (max.): 20 cycles

### PHYSICAL

Housing: LCP, UL94V-0  
Actuator: PA, UL94V-0  
Contact: Copper Alloy  
Plating: Contact Area to Gold or Tin over Nickel  
Fitting Nail: Copper Alloy, Tin over Nickel plating  
Operating Temperature: -40 to +85°C

### CIRCUIT SIZE

4, 5, 6, 7, 8, 9, 10, 11, 12, 13, 14, 15, 16, 17, 18,  
19, 20, 21, 22, 23, 24, 25, 26, 27, 28, 29, 30, 31,  
32, 33, 34, 35, 36, 37, 38, 39, 40, 41, 42, 43, 44,  
45, 50

## Dimensions

Refer to [molex.com](http://molex.com) for detail dimension

## Ordering Information

Replace with \*\* for Circuit size.

Series No.	Pitch	Contact Position	Orientation	Circuits	Operating Temperature	Plating
52745-**33	0.50mm	Top	Right Angle	4 to 20	-40 to +85°C	New Tin
52745-**97	0.50mm	Top	Right Angle	4 to 20	-40 to +85°C	Gold
52746-**33	0.50mm	Bottom	Right Angle	4 to 20	-40 to +85°C	New Tin
52746-**71	0.50mm	Bottom	Right Angle	4 to 20	-40 to +85°C	Gold
52435-**33	0.50mm	Top	Right Angle	21 to 30	-40 to +85°C	New Tin
52435-**71	0.50mm	Top	Right Angle	21 to 30	-40 to +85°C	Gold
52437-**33	0.50mm	Bottom	Right Angle	21 to 30	-40 to +85°C	New Tin
52437-**71	0.50mm	Bottom	Right Angle	21 to 30	-40 to +85°C	Gold
54104-**33	0.50mm	Top	Right Angle	30 to 50	-40 to +85°C	New Tin
54104-**31	0.50mm	Top	Right Angle	30 to 50	-40 to +85°C	Gold
54132-**33	0.50mm	Bottom	Right Angle	30 to 50	-40 to +85°C	New Tin
54132-**62	0.50mm	Bottom	Right Angle	30 to 50	-40 to +85°C	Gold
52559-**34	0.50mm	Vertical	Vertical	6 to 42	-40 to +85°C	New Tin
52559-**52	0.50mm	Vertical	Vertical	6 to 42	-40 to +85°C	Gold
52207-**33	1.00mm	Top	Right Angle	3 to 34	-40 to +85°C	New Tin
52207-**60	1.00mm	Top	Right Angle	3 to 34	-40 to +85°C	Gold
52271-**79	1.00mm	Bottom	Right Angle	4 to 30	-40 to +85°C	New Tin
52271-**69	1.00mm	Bottom	Right Angle	4 to 30	-40 to +85°C	Gold
52610-**33	1.00mm	Vertical	Vertical	5 to 30	-40 to +85°C	New Tin
52610-**72	1.00mm	Vertical	Vertical	5 to 30	-40 to +85°C	Gold

[www.molex.com/link/easyon.html](http://www.molex.com/link/easyon.html)

Molex is a registered trademark of Molex, LLC in the United States of America and may be registered in other countries; all other trademarks listed herein belong to their respective owners.