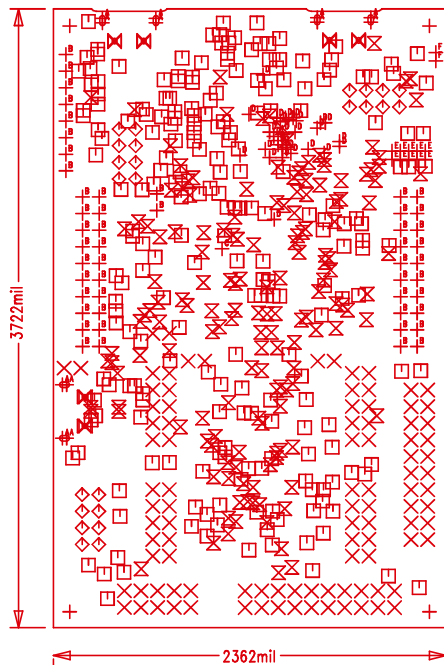


SIZE	QTY	SYM	PLATED	THR/PRTL	TOL
106.3	4	+	YES	THR	+/-0.0
39	98	×	YES	THR	+/-0.0
9.84	224	□	YES	THR	+/-0.0
40.16	24	◇	YES	THR	+/-0.0
8	161	⊗	YES	THR	+/-0.0
25.59 x 33.46	6	⊠	YES	THR	+/-0.0
32.48 x 59.06	6	⊡ ^A	YES	THR	+/-0.0
39.37	50	⊢ ^B	YES	THR	+/-0.0
15.75	1	⊣ ^C	YES	THR	+/-0.0
7.87	30	⊤ ^D	YES	THR	+/-0.0
25.59	10	⊥ ^E	YES	THR	+/-0.0
28	2	⊦ ^F	YES	THR	+/-0.0



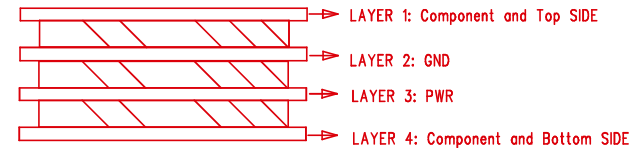
LAYER :	DRILL DRAWING	DESIGNER :	SS
MODEL :	Xpro+TDK Sensor	VERSION :	B
		DATE :	9-14-2017
TDK		TEL : 1-408-988-7339 www.invensense.com	

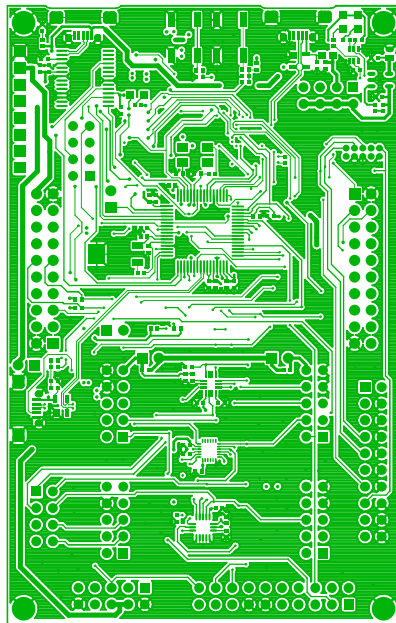
MEMS SENSOR

Do Not Apply Big Force to Break Board

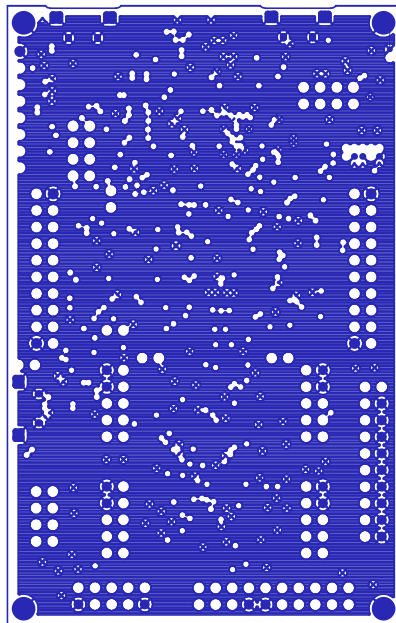
- Materials: Blue clad, FR-4/Epoxy class, or equivalent, dielectric constant 4.2 +/-0.2, see cross section for board thickness, copper weight and layer structures.
- Components on top and bottom layers.
- Minimum signal trace width/spacing : 4/6 mils
 - minimum hole size is 7.87 mils drill
 - all plated holes are to be plated thru and with min .001 thick
 - all hole diameters are finished sizes in mil
 - all holes to be +/-0.003 from true position unless otherwise specified for PTH, or +/-0.002 if it's NPTH
 - NC drill file has been supplied, see hole size table.
- Front to back pattern shall register within .005
- Layer to layer (pattern to pattern) registration to be +/-0.005
- Soldermask: Both sides of board, Liquid Photo Imageable, soldermask over bare copper (SMOBC), blue
- Warpage and twist to meet IPC class II
- Silkscreen using white non-conductive epoxy or equivalent
Remove silkscreen on pad
- Finish:
 - Edge to be free of loose sliver and rough edge
 - Finished board shall not have nicks scratches, voids, exposed copper, poor plating or misdrilled holes
 - Trace width tol=+/-0.001 of finished trace width
- Date code and UL rating shall be permanently marked or etched on PCB
- Surface Finish: ENIG


LAYERS STACK-UP, Total Thickness = 62 mil

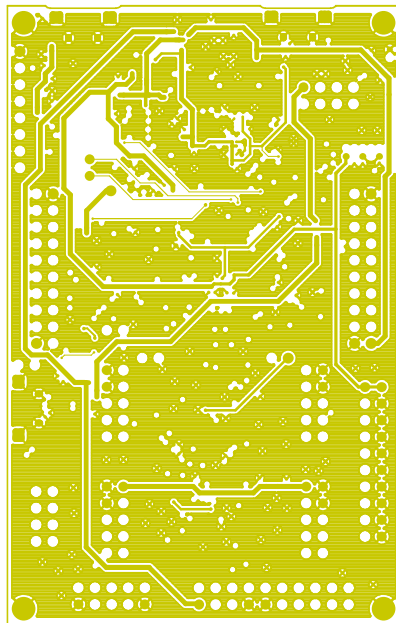




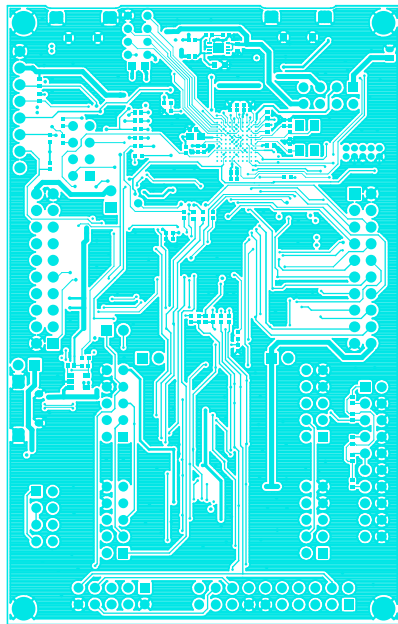
LAYER : L1 : TOP LAYER		DESIGNER:	SS
MODEL :	Xpro+TDK Sensor	VERSION :	B
		DATE :	9-14-2017
TDK		TEL : 1-408-988-7339 www.invensense.com	



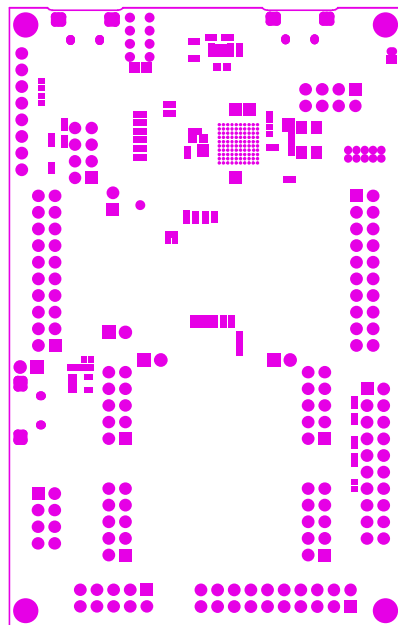
LAYER : L2 : GROUND PLANE		DESIGNER:	SS
MODEL :	Xpro+TDK Sensor	VERSION :	B
		DATE :	9-14-2017
		TEL : 1-408-988-7339 www.invensense.com	




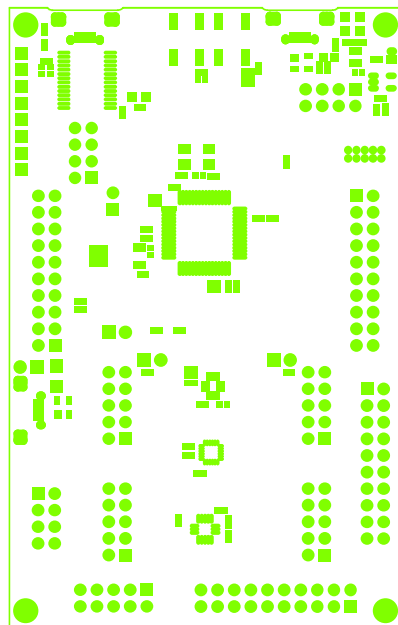
LAYER : L3 : PWR PLANE		DESIGNER:	SS
MODEL :	Xpro+TDK Sensor	VERSION :	B
		DATE :	9-14-2017
TDK		TEL : 1-408-988-7339 www.invensense.com	



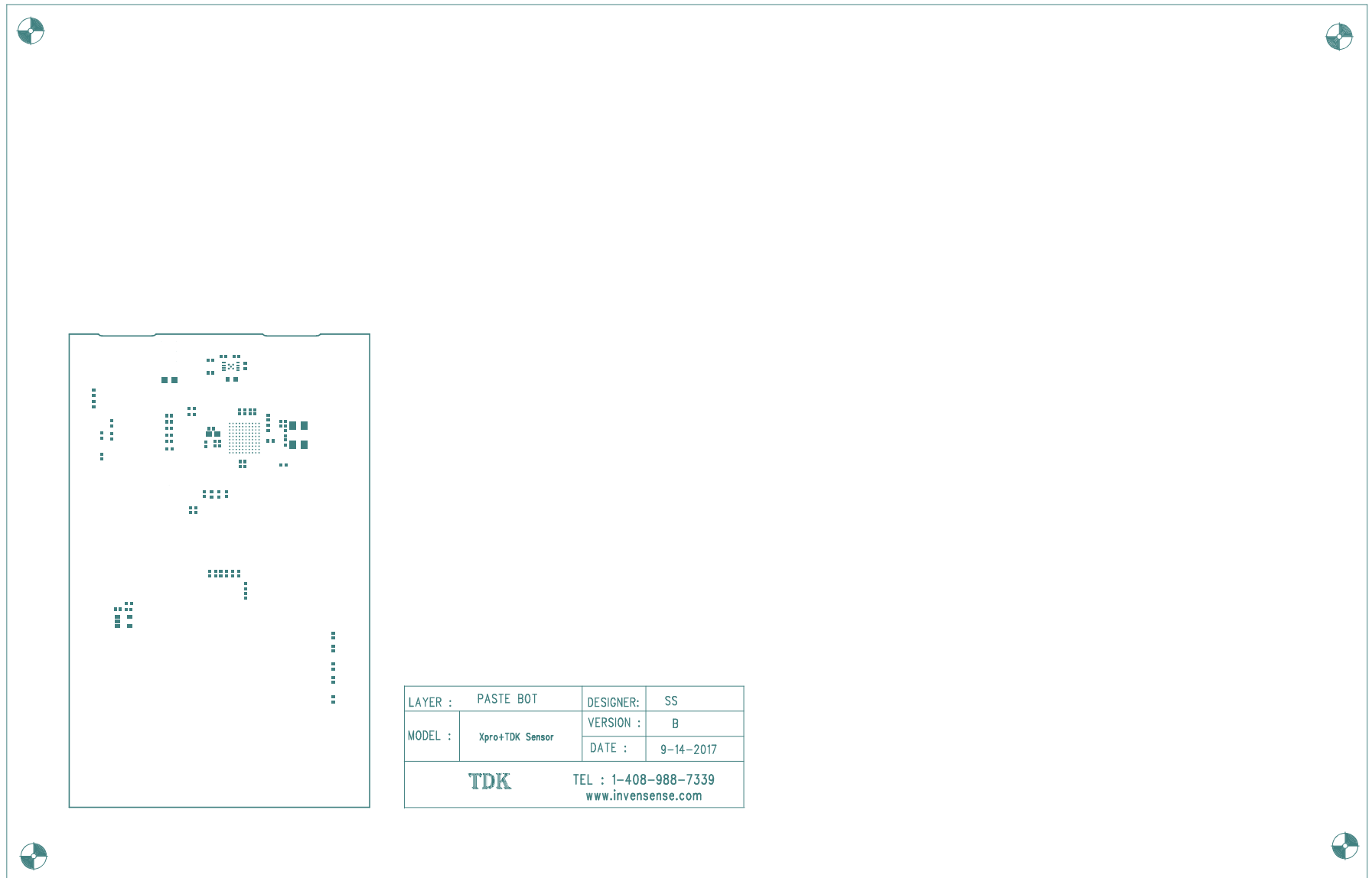
LAYER : L4 : BOTTOM LAYER		DESIGNER:	SS
MODEL :	Xpro+TDK Sensor	VERSION :	B
		DATE :	9-14-2017
TDK		TEL : 1-408-988-7339 www.invensense.com	

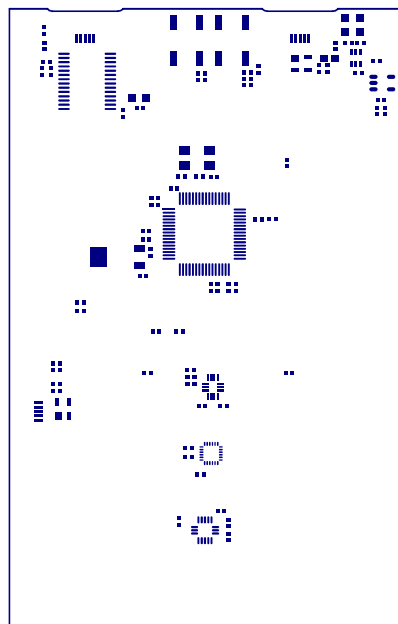


LAYER : MASK BOTTOM		DESIGNER:	SS
MODEL :	Xpro+TDK Sensor	VERSION :	B
		DATE :	9-14-2017
		TEL : 1-408-988-7339 www.invensense.com	

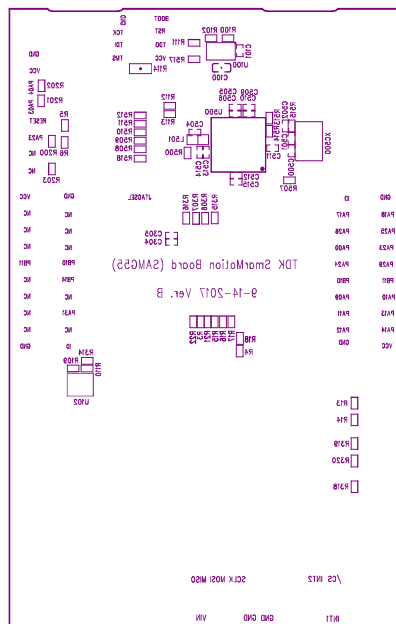



LAYER :	MASK TOP	DESIGNER:	SS
MODEL :	Xpro+TDK Sensor	VERSION :	B
		DATE :	9-14-2017
TDK		TEL : 1-408-988-7339 www.invensense.com	





LAYER :	PASTE TOP	DESIGNER:	SS
MODEL :	Xpro+TDK Sensor	VERSION :	B
		DATE :	9-14-2017
TDK		TEL : 1-408-988-7339 www.invensense.com	



LAYER : SILKSCREEN BOTTOM		DESIGNER:	SS
MODEL :	Xpro+TDK Sensor	VERSION :	B
		DATE :	9-14-2017
		TEL : 1-408-988-7339 www.invensense.com	

